





Welcome.....	5
A Brief History.....	6
The Course	9
Course Tour.....	10
Pro Shop.....	18
Game Improvement.....	19
Becoming a Member	22
Member Benefits	29
Members’ Golf.....	31
Special Golf Events	34
Junior Golf.....	37
Visitors and Social Golf.....	39
Clubhouse.....	41
Functions and Special Occasions.....	43
Corporate Days.....	45
How to Find Us.....	49
Contact Information.....	50



Premier
PUBLISHING

PREMIER PUBLISHING
14 Ellis St
South Yarra VIC 3141
T 03 9521 7994
E info@premierpublishing.com.au
W www.premierpublishing.com.au

Geraldton Golf Club and Premier wish to thank the advertisers who appear in this publication for their support and wish them every business success. The contents of this brochure are believed to be correct at the time of printing, nevertheless, we cannot endorse and readers should not rely solely upon the accuracy of any statements or claims contained herein without prior consultation with the service provider.

Photography by: LMR Photography - Larissa Taylor
0438 945 925



WELCOME TO GERALDTON GOLF CLUB



Geraldton Golf Club is a much-loved Club, conveniently located close to the heart of the city of Geraldton on Western Australia's Coral Coast.

An oasis of green and enjoying with views to the Moresby Ranges, the Club is an attractive location on which to enjoy a round of golf.

The 18-hole course offers an invigorating test to players of all abilities, challenging lifelong members and first-time visitors in equal measure.

A dedicated PGA-qualified Golf Professional is available throughout the week for coaching and advice; and practice facilities on site include a driving range and pitching and putting greens to assist golfers of all levels reach their golfing goals.

Great service and good company can be enjoyed in the Clubhouse. The Club caters for functions of all kinds, from

birthday celebrations and wedding receptions to product launches and conferences.

Golf groups are very welcome, with friendly staff committed to creating a golf day to remember both on and off the course. Corporate clients can benefit from sponsorship opportunities and take advantage of the great venue for a meeting or special occasion.

There are many reasons you should come and visit, but right at the top is the promise of the warmest of welcomes. The staff and members of the Geraldton Golf Club look forward to seeing you soon.



Chapman Road
Dental Clinic
YOUR FAMILY DENTAL PRACTICE

A BRIEF HISTORY

Geraldton Golf Club was formed in 1926, playing on sites at Majors Hill and inside the racecourse and showgrounds at Utakarra Oval before moving to its present home, in 1932.

Looking at the magnificent course available for play today, it is hard to imagine the amount of work that had to be undertaken with no modern machinery to clear the course of virgin scrub.

During the 1930s the Club boasted a total membership of approximately 30 members and associates, a ground staff of one pensioner and a plant that consisted of a wheelbarrow and odd hand implements!

In its early days the course consisted of dirt fairways and sand 'greens'. Play was only possible during winter months. The Clubhouse was a wood and iron three-room building.

During the Second World War, the Club was taken over by the Army and the Clubhouse housed a dental unit. Two top

Australian golfers of the day were in this Army unit. They were Bill Bogler, an Australian Open winner, and Keith Clarke, the son of the famous professional, Basneque Clarke.

It was not until the late 1970s that Geraldton introduced grass greens, thanks to Club member Jim Davey, whose experimentation discovered a type of grass that thrived in the saltwater from the bores that were used to irrigate the course in those days.

Today the Club is the proud owner of a first class 18-hole grassed course, a modern Clubhouse with all the facilities and state-of-the-art plant. This offers the discerning golfer a year-round course at a membership which is nearly half the fees of many metropolitan Clubs.

Chapman Road Dental Clinic has been providing dental care to the people of Geraldton and surroundings areas for 35 years.

What we do

- ✓ Restorations
- ✓ Crowns, bridges and veneers
- ✓ Root canal treatments - Endodontic treatments
- ✓ Extractions
- ✓ Children's dentistry
- ✓ Emergency treatments
- ✓ Preventative dentistry
- ✓ Oral hygiene
- ✓ Oral cancer screening
- ✓ Digital xrays and OPG's
- ✓ Treatment under general anaesthetic
- ✓ Teeth whitening
- ✓ Referrals to dental specialists
- ✓ Splints - night guards and mouthguards
- ✓ Wisdom teeth
- ✓ HICAPS
- ✓ All insurance funds welcome
- ✓ VISA, mastercard

Principle Dentist - Dr Geoff Noonan BDS (UWA)

Dentists - Dr Neel Shah BDS (lond) MJDF Dip Rest Dent RCS (Eng), Dr Michelle Huang BDS Hon (UWA)

Dental Therapist - Debbie Munday Dental hygienist - Samantha Stuart

Address: 100 Chapman Rd, Geraldton WA 6530 | **Phone:** (08) 9964 3577 | **Monday - Friday** 8am-5pm



THE COURSE

The course at Geraldton Golf Club is widely regarded to be one of the best in rural WA. Its saltene greens and couch grass fairways flourish in the warm climate and ensure a perfect playing surface.

Those journeying to Pass Street and discovering the Club for the first time are amazed to find this emerald gem right on the doorstep of the city.

Just as importantly, golfers of all levels are challenged by the course.

The course is a par-71 for men, with three par-3s and two par-5s on the front nine and two par-3s and two par-5s on the back nine. The Women play an equally invigorating par-72 layout, benefitting from an extra shot on the 11th, one of the toughest par-4s on the card for the men.

At 5,933 metres off the blue championship tees, it is a challenge, rewarding strategy and careful Club selection.

The thousands of gum trees that line the course are a majestic sight, but better viewed from the centre of the fairway!



COURSE TOUR

To help you make the most of your time on the course, consider these useful tips and course notes.

Distances: Men from the blue and white tees and women from the red tees.

HOLE 1, PAR 4

Blue course 334m
White Course 317m
Red Course 305m

A shorter par 4 than most, the 1st hole is downhill off the tee continuing in an easterly direction. The green is tucked slightly right behind the trees at the end of the fairway and is protected right and left with bunkers. The ideal place for your second shot is to the left.

HOLE 2, PAR 3

Blue course 143m
White Course 131m
Red Course 124m

A small but challenging par 3, requiring a precise tee shot. The green is protected with bunkers both left and right, and, with a tricky chip from the back of the green, your tee shot needs to be on target and not long to ensure a par on what is rated one of the easier holes on the course.

HOLE 3, PAR 4

Blue course 357m
White Course 350m
Red Course 308m

A tough par 4, with a dog-leg to the right creating difficulty off the tee. Big hitters fear overshooting the corner. If you can't reach that far ensure your tee shot is left, otherwise you will be cut off by the overhanging trees at the corner of the dog leg. With no bunkers around the green, golfers only have to contend with the challenging putting surface.

HOLE 4, PAR 5

Blue course 480m
White Course 445m
Red Course 445m

A long par 5 sets up for a challenging hole. With a dogleg to the left, the ideal drive is to the right of the fairway to avoid the trees on the left of the dogleg which are more in play than you might think at first glance. However, playing to the right brings into play two fairway bunkers on the edge of the fairway so planning is essential. A big green with no protection short enables the big hitters to go for the green in two, or makes a lay-up easy.

Retirement living with extra care



Nestled close to Geraldton's town centre with easy access to health care, shopping and recreational facilities, Beachlands Village is ideal for those thinking about their retirement living.

The Village boasts spacious, independent living units that all feature high quality finishes and a brand new on-site Community Centre.

One of the advantages of living at Beachlands Village is you can access higher care services as you need them. You can enjoy all the benefits of independent living with the comfort of knowing that if you need help around the house or your health needs become more complex, help is on hand.

Call 9964 1863 for a brochure or to arrange an inspection. We look forward to giving you a warm Beachlands Village welcome soon.

134 Gregory Street, Geraldton
rslcarewa.com.au





- Free Wi-Fi
- Free Parking
- Free Laundry Facilities
- Swimming Pool & BBQ Area
- Close to City centre and a short walk to Geraldton's beautiful foreshore



HOLE 1

HOLE 5, PAR 3

Blue course 184m
White Course 174m
Red Course 130m

This par 3 is one of the more difficult holes on the front nine. Needing a wood for most golfers, or even a long iron for the big hitters, most players run the ball up to the green, as it is not protected. Left and right of the green are bunkers penalising an off-target tee shot. This is a hole you will be happy to par.

HOLE 6, PAR 4

Blue course 394m
White Course 386m
Red Course 321m

A long par 4 into the southerly breeze, this is the toughest hole on the course. A wide fairway doesn't help many players with any draw or slice being pushed into the trees. Missing the fairway almost definitely makes hitting the green in two impossible. With trees protecting the left of the green, the right side of the fairway is the best place to be. A large green sloping severely from back to front makes for a challenging putt coming down the hill.

HOLE 7, PAR 5

Blue course 455m
White Course 445m
Red Course 445m

A fairly straight-forward par 5 if you stay out of danger makes a very birdie-able hole. A misdirected shot may result in out of bounds down the left side. The green is protected by four bunkers, making it difficult to hit in two. A long undulating green with some hidden breaks set up a tough putting experience.

HOLE 8, PAR 3

Blue course 181m
White Course 173m
Red Course 129m

Another scintillating but challenging lengthy par 3. The southerly pushes everything right, making it hard to keep your ball heading to the green. Protected with bunkers left and right and a strong slope from back to front, the aim will be to finish short or on the front edge. A par on this hole will be well deserved.

08 9921 6111

sailsgeraldton@westnet.com.au
www.sailsgeraldton.com.au



HOLE 10

HOLE 9, PAR 4

Blue course 301m

White Course 287m

Red Course 277m

This is the easiest hole on the front nine, straight up the hill to the Clubhouse. With a wide fairway and little protection, a good drive will leave only a wedge into the green for the big hitters. The bunkers on either side of the green mean a precise 2nd shot is essential. The green has a subtle slope from back to front. All in all an easy way to finish a tough nine holes.

HOLE 10, PAR 5

Blue course 485m

White Course 437m

Red Course 458m

This is a fantastic opening hole to the second nine, the snake-like shape can be rewarding for some. However, miss the fairway left and you find yourself in the dense trees and to the right you may find the fairway bunkers. The fairway then doglegs slightly left before straightening up towards the end of the hole, meaning your lay-up needs to be perfect. With small bunkers left and right of the green, a birdie is definitely achievable.

HOLE 11

Blue course 417m, Par 4

White Course 399m, Par 4

Red Course 399m, Par 5

This long, difficult par 4 opens with a tough drive, with the goal to get over the first mound. Go left and you cut yourself out, making right the preferred bail-out area. If your drive doesn't clear the mound it's nearly impossible to reach the green in two. Even with a big drive you will have at least a 5 iron to the green. Left of the fairway is out of bounds, but that's the side your ball needs to go to avoid the large overhanging trees. A slippery green with lots of different slopes creates a difficult putting surface. Escaping with a par here is very satisfying.

HOLE 12, PAR 4

Blue course 343m

White Course 325m

Red Course 311m

This small but challenging par 4 following the tough 11th hole doesn't put you at ease. A precise drive is needed to avoid the overhanging trees on the right of the fairway, and the out of bounds close on the left. An ideal drive will position you with a mid-iron to a large green protected by one bunker on the front left. Another back-to-front sloping green means it's best to leave an uphill putt.



HOLE 13

HOLE 13, PAR 3

Blue course 162m

White Course 153m

Red Course 98m

This straight forward par 3 is a relief for most after the tough tee shots from the previous two holes. Only a mid-iron for most golfers, a straight shot even running up to the green is enough to leave a birdie putt. However, this is another hole that punishes you for an errant tee shot, as left and right of the green results in a tough bunker shot from two of the deepest bunkers on the course.

HOLE 14, PAR 4

Blue course 350m

White Course 334m

Red Course 329m

This is the easiest hole on the course. A drive to the right centre of the fairway will avoid the fairway bunker and result in an easy second shot to the green. Just ensure that you miss the trees just right of the tee as once in there the ball doesn't travel far. With only two small bunkers to protect the green, it shouldn't be too difficult to have a birdie putt. With a straight forward green you should be looking to hole it.



HOLE 16

HOLE 15, PAR 3

Blue course 154m

White Course 143m

Red Course 143m

Another short par 3, only a mid-iron for most players. With only a small window to run the ball, you should be looking to land this on the full. There is a bunker short right and another all along the left. Neither bunker is nice but the left one is by far the tougher with the green running away from you. Another tricky green makes a one-putt difficult but once you know the break anything is possible.

HOLE 16, PAR 5

Blue course 505m

White Course 496m

Red Course 465m

The longest par 5 on the course isn't something you want to face if you are playing poorly. A good drive is right-centre of the fairway to straighten out the slight dog-leg. Left and right may result in no shot forward, making the hole even longer. Two good shots will leave most golfers with less than 150 metres to the green, but a third shot up the hill to a dome-shaped green still makes the putting surface difficult to hit. With no protection around the hole, chipping and putting isn't difficult if you haven't damaged your score too much before this point.

HOLE 17, PAR 4

Blue course 347m

White Course 343m

Red Course 343m

A glamorous-looking hole from the tee is anything but. With overhanging trees, to have a shot at the green for two you need to be positioned left. However, down the left side is a fairway bunker you can't see from the tee. The green is flat but narrow and missing either side makes for a tough up and down. However, if you find the fairway off the tee and the green for two you should be looking to make a relatively straight forward putt.

HOLE 18, PAR 4

Blue course 341m

White Course 322m

Red Course 317m

A tough finishing hole, the 18th is a hard hole to master. The ideal shot is a draw up the middle to miss the large overhanging trees up the left that grab any ball going near them. An uphill second shot into the southerly breeze makes correct Club selection very tricky. A hard sloping green from back to front means you want to be putting up the hill if possible.



PRO SHOP

Open 7 days, our resident PGA member offers a warm welcome, professional and personable service.

The Pro Shop offers just about everything you would need to enjoy a good day's golfing.

To get the most from your game, ask about our popular custom fitting service. The staff in the Pro Shop are fully qualified fitters for Titleist, Taylor Made, Wilson, Callaway & PING and can custom fit any other brand in stock.

A fast and efficient Club repair service is also offered.

Good quality sets of Clubs are available for hire, as are electric carts and pull buggies.

Please feel free to come in and chat to our staff regarding your requirements. For general enquiries and tee bookings, call (08) 9964 1911 and we will be happy to take care of your needs.



GAME IMPROVEMENT

Geraldton Golf Club has everything on hand to ensure that golfers of all abilities reach their potential and enjoy our great course to the full.

Lessons can be booked with our highly-rated PGA-qualified Teaching Professional who would be delighted to produce a coaching plan to help take your game to the next level.

Aims and objectives will be discussed, weaknesses identified and clear, concise instruction delivered in a way that enables the golfer to understand what is being taught, the reason for the change and how it will benefit their game.

Our PGA Professional can help anyone from the beginner to the seasoned professional looking to fine-tune their game. Video analysis is available and makes not only a great coaching tool, but an excellent reminder for the student of the swing change or new technique they were working on.

Quality instruction plays a crucial part in helping the golfer committed to becoming as good a player as available time, ability and dedication allows. Another key component is having accompanying practice facilities to work on ingraining new skills and techniques.

Members and Visitors at Geraldton are well catered for here, too, with a number of areas available for them to work on their game, including a full-length driving range with grass tees, and a putting green for working on the short game available every day.

Take your first step to better golf: call the Pro Shop on (08) 9964 1911 and book your lesson today.



OPTION
1

Purchase your House & Land Package

- Affordable Family sized blocks from 713m² to 841m² average block size 776m²
- All services underground including NBN
- House & Land Packages contact Humfrey Land Developments.

OPTION
2

Ready To Move In Nothing To Do

- 8 Units Priced at \$295,000 including land, GST inclusive.
- Including Landscaping Air-con & Fencing

Become part of a community you can grow with



☎ 08 9964 8028 📠 0428 213 494 www.hld.com.au mary@hld.com.au 272 Foreshore Drive, Geraldton



*Quality Lifestyle
Beachfront Lots
overlooking Champion Bay.*

Adjacent to the Batavia Coast Marina,
500m from Geraldton CBD.
Separate Titles for each
block, ready to build on.
Building Guidelines ensure
sub-division is of the highest quality.



Exquisite jewellery at affordable prices.

Choose from our magnificent display or have a piece individually designed to suit you.

Naturally from the pristine waters of the Abrolhos Islands

Chimere Pearls
272 Foreshore Drive The Marina
Geraldton WA 6530
(In the Humfrey Land Developments building)

Specialising in Remodelling & Custom Jewellery

Opening Hours
Monday - Friday
9am - 5pm

☎ 9965 5145
f Chimere Pearls
🌐 chimerepearls.com.au



BECOMING A MEMBER

If you have enjoyed a round of golf as a visitor to Geraldton Golf Club, then you really should consider becoming a member.

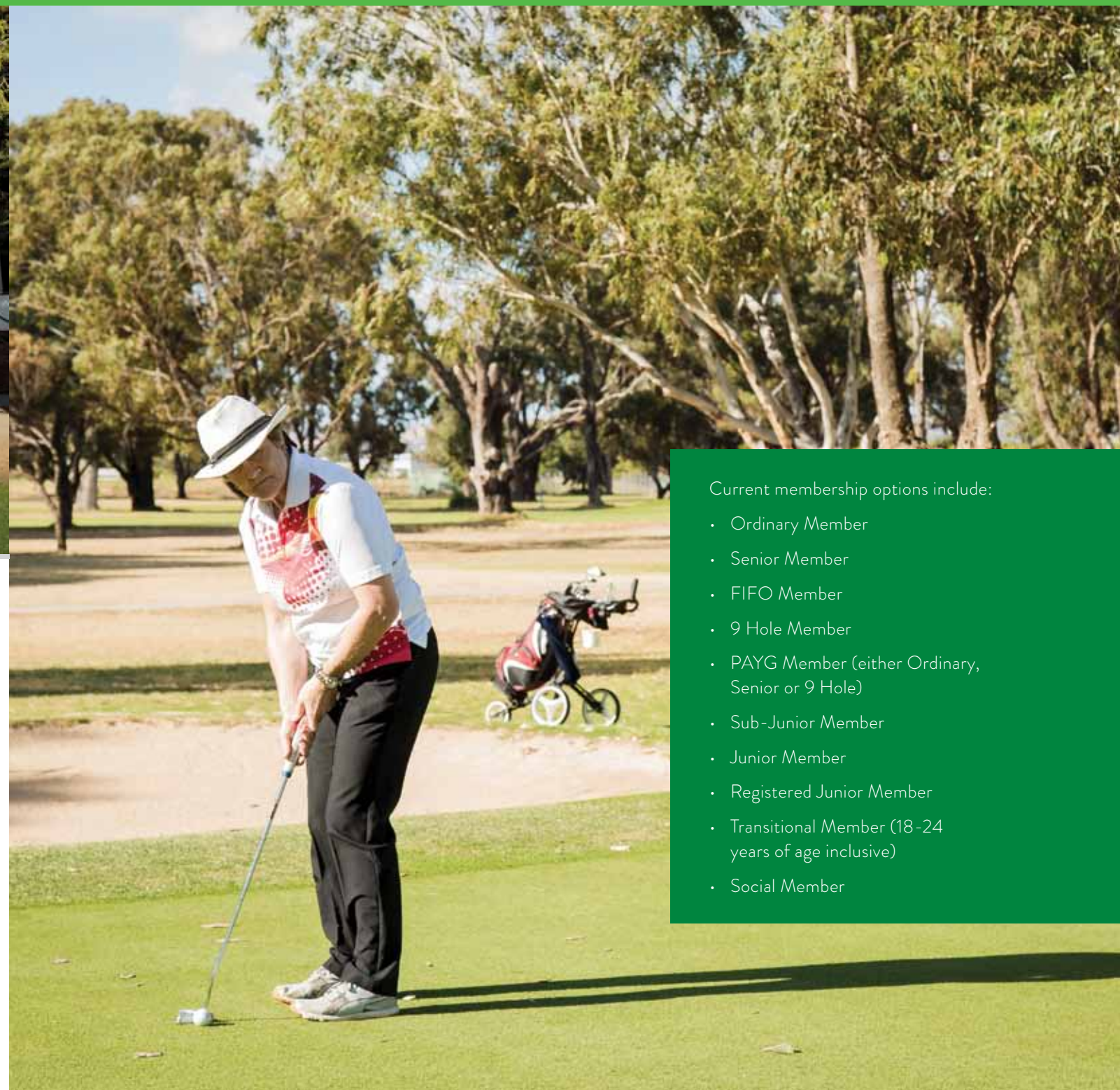
Membership provides access to an outstanding array of facilities at your fingertips. The magnificent 18-hole course is reason enough to join, but the friendly atmosphere in the Clubhouse has to be experienced in person to truly be appreciated.

Play 9 holes after work, and have a drink in our Clubhouse, or just come and socialise with friends, or meet new ones.

We have a range of membership options to suit your lifestyle, including flexible options for the time-poor such as Pay as You Go and 9-Hole Membership.

We also have a Social Membership for the lapsed or non golfer who wishes to make use of the Clubhouse facilities, to benefit from Club prices and to have somewhere welcoming to bring friends and family.

One thing all memberships have in common is the value they offer. In comparison to a metropolitan Club, Geraldton Golf Club will make your hard-earned dollars stretch further.



Current membership options include:

- Ordinary Member
- Senior Member
- FIFO Member
- 9 Hole Member
- PAYG Member (either Ordinary, Senior or 9 Hole)
- Sub-Junior Member
- Junior Member
- Registered Junior Member
- Transitional Member (18-24 years of age inclusive)
- Social Member

@ALLDECOR
alldcor.com.au

Carpets - Vinyl - Blinds - Rugs

FREE
MEASURE
& QUOTE



Flooring & Blinds fully installed

Reliable & Professional Service

5 year Installation Warranty

27 years locally owned in Geraldton

We travel **ANYWHERE** in the
Midwest and Northwest

Phone us on **08 9964 4233**

or visit our showroom

Shop 1, 2 Jensen St, Cnr North West
Coastal Hwy, Geraldton WA 6530

Find us on Facebook

WE'VE GOT YOUR **COLOUR**

equity
FINANCIAL PLANNERS



Financial planning is about developing
strategies to help you manage your
financial affairs and meet your life goals...

Some of the areas we provide advice in are:

- **Superannuation**
Personal, Employer, SMSF
- **Personal Insurance**
Life, Trauma, Income Protection
- **Retirement Planning**
- **Wealth Creation**
- **Estate Planning**
- **Banking**
Home Loans, Savings

Accredited by
AMP Financial Planning | **AMP**

Call and arrange a financial check up
with Kylie Braschey or Leanne Scott

Ph: 9921 4811 | www.equityfp.com.au

Equity Financial Planners Pty Ltd ABN 20 151 382 311 is an Authorised Representative and
Credit Representative of AMP Financial Planning Pty Limited ABN 89 051 208 327
Australian Financial Services Licence 232706 and Australian Credit Licence 232706

Members can chart their continual
improvement by gaining a Golf
Australia handicap – recognised at
golf Clubs worldwide – and make
their bookings either in person in
the Pro Shop, by phone, or online.

And as all golfers know: the better you play,
the more you will enjoy your game.

We love to see new faces and potential members
should have no fears about joining us. There is
a warm camaraderie between members, guests
and staff. We don't stand on ceremony - you
will instantly discover that when you walk into
Grumblers Bar!

The membership year begins in March, but new
members can join at any time and pay a pro rata
subscription in their first year.

Memberships include all affiliation fees (GolfWA,
Golf Link etc).

For more details, please contact the
Secretary/Manager by phone: (08) 9921 3326
or email: email@geraldtongolfclub.com.au.





HOLE 8



Mid West Funerals

24 HOURS A DAY
08 9965 2100

*Honouring your
Trust with Dignity*

admin@midwestfunerals.com.au
40 Sanford Street Geraldton WA 6530

www.midwestfunerals.com.au



Proud Members of the ADFA



Our vision is to shape a healthier Geraldton by personalising health care and providing excellence in customer service.

Our Geraldton chemist is locally owned and operated and has been part of the community for over 20 years.

Pre-ordered your prescription? Have kids in the car? Pharmacy 194 offers a convenient drive thru service, the first of its kind in WA. Drive in and be served by one of our friendly pharmacists without leaving your vehicle

Cant leave the house? Pharmacy 194 offers a free and convenient pick-up and delivery service right to your door.
Free deliveries



194 Durlacher Street,
Geraldton
(convenient parking)

08 9921 6138

www.pharmacy194.com.au



MEMBER BENEFITS

Geraldton Golf Club has much to recommend it. Here is just a selection of the many benefits enjoyed by our members:

- Unlimited access to our 18-hole layout with no ongoing green fees
- Priority access to time slots outside competition times
- Get and maintain an active Golf Australia handicap that allows you to play on most courses in Australia and is recognised around the world
- Excellent Clubhouse facilities, including bar
- Family-friendly atmosphere, where partners and children are genuinely made to feel welcome
- Make new friends – the Club has a lively social scene with organised events and other more spontaneous get-togethers
- Access to a well-stocked Pro Shop with competitively priced goods manned by helpful and knowledgeable staff
- Access to the Club's talented PGA-qualified Professional for coaching and advice, backed up by excellent practice facilities
- Reduced bar prices in members' bar
- Eligibility for election to the Board of Management
- The chance to play in countless Club events throughout the year, many providing the opportunity to win trophies
- Lots of social and less serious golf providing the chance to enjoy the game in a relaxed atmosphere
- Ample car parking



MEMBERS' GOLF

Our members can enjoy a calendar packed with competitions throughout the year, ranging from prestigious Honour Board events through to more relaxed games where the overriding aim is simply enjoying golf in good company.

Several Club competitions act as local qualifiers with the winner going on to represent Geraldton in a regional event against other Clubs. One of the most notable of these is the Holden Scramble, a hugely popular Pro-Amateur team event run by the PGA of Australia.

The traditional Honour Board events feature on the Club's annual golfing calendar, allowing players of all abilities to shine and have their name written in the Club's history.

In a typical week at Geraldton, Men and Ladies both enjoy golf competitions on Saturday and Sunday. The Ladies also play competitively on Wednesday and on Tuesday there is a very keen group of lady golfers who enjoy nine holes first thing in the morning. Thursday sees a popular and large number of men called the Scroungers take centre stage.

There is also a very popular intra-Club match play pennant competition for men which runs through the golf season.

Friday mornings at 9am during the school term is for lady golfers wanting to learn how to play golf. These "9@9" sessions feature a 30-minute lesson with our Golf Professional followed by a chance to "Have A Go" playing 9 holes of Ambrose Golf. It is the perfect, relaxed way to discover the delights of golf and the opportunity to make new friends and discover potential playing partners!

Visit www.geraldtongolfclub.com.au/fixtures to get a more detailed idea of the golf on offer.

Specs 2-4-1

BUY ONE GET ONE FREE*

The best and original buy one get one free offer is simple.

Buy any complete pair of prescription glasses from Specs 2-4-1 and receive another pair of prescription glasses complete with single vision lenses absolutely free*

FULLY COVERED GLASSES FROM A SELECTED RANGE FOR ALL PRIVATE HEALTH FUNDS

OVER 200 FRAMES TO CHOOSE FROM!



BULK BILLED EYE TESTS AVAILABLE TODAY!*

132 Marine Terrace Geraldton WA 6530
geraldton@spectacles241.com.au

08 9964 8922

WWW.SPECS241.COM.AU

*Conditions apply see in store for full details.



Warren Taylor
HOMES

Warren Taylor Homes - with you every step of the way

Bring your home to life with Warren Taylor Homes. Our team are by your side every step of the way, providing you with our uniquely personalised and friendly service, to build the home that you want.

Our entire team is based in-house. Sit around the table with our handpicked builder and designers to perfect your home. Our registered builder will be on site, making sure the workmanship is of a premium standard. Our team are freely available to discuss any query you may have.

What sets us apart

At Warren Taylor Homes you are surrounded by a team that has been handpicked for their expertise, experience and knowledge. We listen to your needs, your wants, your ideas.

All of our contractors and suppliers are local and have been selected for their high quality workmanship and premium standard finishes. We have made sure that your investment is in the right hands and that your home reflects the very essence of you.



9935 9444

warren@warrentaylor.com.au

150 Chapman Road, Geraldton

Monday to Friday 8am – 5pm



Geraldton's members have no airs or graces, they are just decent, fun-loving people who love the game of golf and each other's company and having a laugh.

A number of social events are held throughout the year providing a great opportunity to meet other members and make new friends. Again, their varied nature means that there should be something to appeal to all tastes. Melbourne Cup Day and the Club's annual Presentation Dinner are just two highlights of the Club's social calendar.

We celebrate Christmas in July, enjoy Twilight Golf and a friendly get-together for a Club social night each Friday, with raffles and the chance to win some great prizes.

SPECIAL GOLF EVENTS

Geraldton Golf Club hosts several feature golf events during the season which are open to members and players from other Clubs.

These tournaments always receive wonderful support, are well received by the participants and give the Club the chance to showcase its excellent facilities to a wider audience.

One of the highlights of the year is Geraldton Country Week held in January. First staged in 1980, it has gone from strength to strength and developed into the best week of golf in country Western Australia.

Staged jointly with our friends at Spalding Park Golf Club, our event is unique in offering separate daily competitions for sand and grass green-based golfers for a full week. Most of our visitors extend their stay to play in Club events prior to and after Country Week.

Other events at Geraldton include the Easter Amateur Open, a 54-hole event for men and women played over three days from Saturday to Easter Monday which is preceded by a relaxed rolling Stableford competition on Good Friday.

The Geraldton Amateur Open is a 36-hole stroke play event held in early June, with prizes for men and women.

Details of these – and our other major events – are always publicised well in advance on the Club website, www.geraldtongolfclub.com.au, and our Facebook page.



HOLE 12



JUNIOR GOLF

Geraldton Golf Club prides itself on being a family Club and is a great place for juniors to learn to play the game.

We are committed to turning hopeful young golfers into the best players they can possibly be, offering a safe and supportive environment in which to develop.

Juniors represent the future, both for our Club and the game of golf and nurturing the next generation of players is one of our core values, which is why the Club has one of the strongest junior programs in the region.

We start the beginners in our SNAG Golf Group. SNAG stands for Starting New At Golf and features fun, easy to use equipment and simplified rules and terminology.

Each child is taught the basics, so they have the fundamentals in place to be able to go on and enjoy a lifetime's good golf. As the child's confidence and ability grows, they progress to the stage where they can go out

and enjoy play on the course. Visit snaggolf.com and www.mygolf.org.au to find out more.

Our junior coaches are supportive, patient and encouraging. Help is given to players of all abilities and every encouragement given for the high fliers to realise their golfing dreams.

Whatever their level, golf is a great sport for children to learn. It teaches respect, focus, concentration, coordination and, above all, goodwill towards others. These are life skills that every parent wants of their children.

For details of how your child can enjoy golf at Geraldton Golf Club, pop into the Pro Shop or call the Club on (08) 9964 1911.



CHANGE THE WAY YOU BBQ!



Exclusively available at

BARBEQUES GALORE
GERALDTON

HOMEMAKERS CENTRE

16/208 - 210 NORTHWEST COASTAL HWY

PH.9964 3314

**Come and
visit us for a
FREE
Hearing
Assessment
valued at
\$110.**

**Connect
Hearing** 
Connecting you to life

**119 Cathedral Avenue
Geraldton
Phone: 9722 6770**

Terms & Conditions apply.



VISITORS AND SOCIAL GOLF

Visitors wishing to come and enjoy our picturesque golf course are made to feel most welcome here at Geraldton Golf Club.

Social golf is available most days outside the Club's designated competition times or other major events such as corporate golf days. It is always advisable to phone ahead to book a tee-time or to check with the Club our competition schedule for the day.

Enjoy the golf and stay for a drink in the Clubhouse, where you will find the welcome just as warm as the one you received in the Pro Shop or out on the course.

Geraldton has a wonderful course. Not too easy, not too tough, but the perfect challenge for any player no matter what their level of expertise. We have Clubs for hire and

electric carts and trolleys available to hire for those wishing to save their energy to play their best golf.

Situated on Australia's Coral Coast, Geraldton is a great place to enjoy a short break. There are wonderful beaches, the area is rich in Indigenous, maritime and pioneering history, and, of course, there's a pretty special golf course to enjoy too! Visit tinyurl.com/geraldton-attractions to find out more.

To avoid disappointment, it is advisable to make a booking with the Pro Shop prior to your visit by calling (08) 9964 1911.



CLUBHOUSE

The Geraldton Golf Club Clubhouse is a delightful place to spend some time in the company of friends, offering a home away from home to members, guests and visitors alike. Our dress code reflects a country Club atmosphere of relaxed and casual.

The elevated location of our Clubhouse provides attractive views down over our magnificent golf course, with the flat topped Moresby Ranges as a backdrop. The terrace is a favourite spot to enjoy a drink.

The large members' lounge provides a comfortable setting in which to relax before or after a round of golf, or simply to meet up with friends for a chat over a cup of coffee or a glass of wine. If you are looking for a less formal bar, then rub shoulders with some of the characters of the Club in Grumblers Bar.

In addition to the pleasant surroundings, a constant throughout the Club's existence has been the excellent service and the warmth of the welcome. Geraldton's staff pride themselves on the personal touch where nothing is too much trouble.

Whether a lifelong member or first-time visitor, the Clubrooms offer a restful atmosphere and the promise of catching up with old friends or making new ones.

As you enjoy your surroundings remember, too, that the Club has a selection of meeting rooms and function areas should you wish to host an event for business or leisure.



Weddings • Families • Maternity
 Newborn • Couples • Pets • Events
 Commercial • Photo restorations
 Invitation design

Larissa Taylor
 LMR Photography

0438 945 925

www.lmrphotography.com.au
www.facebook.com/lmrphotography.wa



FUNCTIONS AND SPECIAL OCCASIONS

Geraldton Golf Club is the perfect venue for just about any function – birthday and Christmas parties, lazy long lunches, elegant weddings, team building events, business seminars and conferences, receptions and cocktail events.

A spectacular location, good food and conscientious staff ensure that we tick all the boxes when it comes to function hosting. We are also conveniently located, less than five minutes from the centre of town.

With panoramic views of the rolling fairways and the Moresby Ranges beyond, Geraldton Golf Club makes a great location for a wedding.

Our dedicated team are on hand to organise anything and everything you may need for your special day, providing personal and professional service from the time that you first call to the time you say your farewells.

The success of the most important day of your life means as much to our staff as it does to you, and it shows.

With the backdrop of the golf course, your bridal photographer will have all the inspiration he or she

needs to create the wedding album of your dreams.

It's not just weddings, though. Geraldton Golf Club is a very appealing setting for your corporate or social functions and events.

Looking for a setting for a business meeting that will ensure your staff are at their creative best? Look no further.

We are able to arrange catering at your request, there is complimentary parking on site and our staff who will ensure you and your guests have a positive experience, no matter what the occasion.

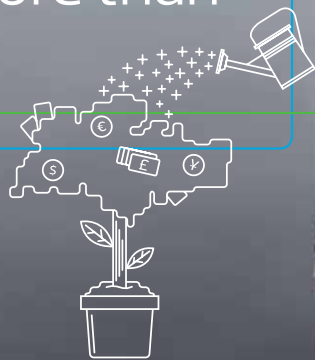
If you have any further questions or would like to arrange a viewing of the premises, please contact the Secretary/Manager by phone: (08) 9921 3326 or email: email@geraldtongolfclub.com.au.



Looking for an adviser
that does more than
just tax?

Let us help you with:

- Profit improvement
- Cashflow maximisation
- Audit
- Self-managed super funds
- Cloud accounting
- Bookkeeping



IT TAKES A LOT TO RUN A SUCCESSFUL BUSINESS.

This is why more businesses in
the Mid West are turning to our
experts so they have more time
to focus on growth.

RSM
Level 1, 12 Bayly St Geraldton
T 9920 7400

rsm.com.au/geraldton

THE POWER OF BEING UNDERSTOOD
AUDIT | TAX | CONSULTING

CORPORATE DAYS

Why not entertain your clients at one of Country WA's premier golf courses, or reward your staff with a golf day, lunch and/or dinner – the perfect mix between work and play!

The opportunity exists for you to plan and enjoy your own corporate golf event at Geraldton Golf Club, which sets the standard when it comes to corporate events.

With a delightful golf course just a few minutes from the centre of town, a spacious and well-appointed Clubhouse, great food and key staff dedicated to make your day a complete success, Geraldton is the perfect choice when it comes to corporate or charity golf days.

Extraordinary corporate golf days seldom happen by chance. Let us plan something extraordinary for your company. We can cater for groups of all sizes and would be happy to tailor a package to suit your budget.

We can format your day, advising the appropriate game and handicapping procedures and take care of as much of the logistics as required, leaving golf day hosts to concentrate on their invited guests and achieving their aims for the event.



HOLE 4

Our bar and kitchen staff will provide for your on-course and off-course refreshment and catering needs.

There is a great selection of merchandise available in the Pro Shop, which is the perfect place to stock up with any competition prizes you may require.

Some relaxed competition always goes down well. Our friendly Professional can suggest formats to ensure your guests get maximum enjoyment from their day. He can also provide nearest the pin and longest drive markers should they be required and is available for golfing tuition or to put on group golfing clinics before play if desired.

Want to make your day extra special? Then consider enlisting the services of our Professional for part of or your entire round. He is available to offer helpful advice or challenge your clients in a friendly Beat the Pro competition.

When the golf is over, relive the day over a drink and food of your choice in the Clubhouse. Once again, it's your event, not ours, and you won't be forced to accept an imperfect

package. Come to us with your food and beverage requirements and we will do our very best to accommodate.

Looking for a unique experience? Ask us about organising a Night Golf event at Geraldton!

You don't have to be a golfer to appreciate what Geraldton Golf Club has to offer. We are an excellent choice for conferences and meetings.

For full details and quotes please contact the Secretary/Manager by phone: (08) 9921 3326 or email: email@geraldtongolfclub.com.au.

For further information on equipment needs including cart and Club hire and, if needed, a coaching clinic with our Club Professional, please contact the Pro Shop by phone: (08) 9964 1911.

Local Office, Local Staff, Local Knowledge

Whether it be business or personal insurance, as Western Australia's leading privately owned insurance broker, EBM have a solution for you.

And as Geraldton locals, we've got plenty at stake to get it right. In fact, we treat your insurance as if it were our own.



Business



Personal



Trades

“Sitting down face-to-face with local business owners allows us to understand their business and the risks they face.”

”

*Owen Connolly
Regional Manager - MidWest*



**Contact Owen and the Geraldton team to
discuss your insurance needs today.**

9920 4777 | geraldton@ebm.com.au

www.ebm.com.au



TAYLOR MECHANICAL & Marine



- Heavy Diesel Marine & Vehicle
- Repairs & Servicing
- Marine Vessel Commissioning
- Auto Electrical Repairs & Installation
- Engine & Power Gen Specialist
- Filter & Oil Sales
- Breakdowns Available 24x7

Rob Taylor
0419 187 857
rob@tmm.net.au



HOW TO FIND US

Geraldton Golf Club is located in Pass Street, less than five minutes' drive from the centre of Geraldton.

DIRECTIONS

From the North

Turn left at the traffic lights off the North West Coastal Highway onto Eighth Street (signposted Wonthella Sporting Complex). At the next roundabout, take the second exit onto Pass Street. The entrance to Geraldton Golf Club is located 900 metres along this road on your left.

From the South

Turn right at the traffic lights from the Brand Highway onto the North West Coastal Highway (signposted Airport). After 2km turn right at the NWC Hwy/Eastern Road intersection (traffic lights) and then turn left at the next roundabout which is Pass Street. The entrance to Geraldton Golf Club is located 200 metres along this road on your right.



CONTACT INFORMATION

Geraldton Golf Club
30 Pass St
Geraldton
WA 6531

Postal Address:

PO Box 389
Geraldton
WA 6531

Club Phone: (08) 9921 3326

Pro Shop Phone: (08) 9964 1911

Email: email@geraldtongolfClub.com.au

Website: www.geraldtongolfClub.com.au

Social Media: Keep up to date with all the latest
news from the Club by liking our Facebook page:
facebook.com/geraldtongolfClub



HOLE 11

