



# Geraldton

Golf Club

OFFICIAL CLUB BROCHURE | 2021 - 2022



# CONTENTS

Welcome to Geraldton Golf Club .....	<b>4</b>	Special Golf Events .....	<b>33</b>
A Brief History .....	<b>8</b>	Junior Golf .....	<b>34</b>
The Course .....	<b>10</b>	Visitors & Social Golf .....	<b>36</b>
Course Tour .....	<b>14</b>	Clubhouse .....	<b>38</b>
Pro Shop .....	<b>26</b>	Functions & Special Occasions.....	<b>39</b>
Game Improvement .....	<b>27</b>	Corporate Days.....	<b>40</b>
Becoming a Member.....	<b>28</b>	How to Find Us .....	<b>43</b>
Member Benefits.....	<b>29</b>	Contact Information .....	<b>43</b>
Members' Golf .....	<b>30</b>		

---

WELCOME TO

# GERALDTON GOLF CLUB

Geraldton Golf Club is a much-loved Club, conveniently located close to the heart of the city of Geraldton on Western Australia's Coral Coast.

An oasis of green and enjoying views to the Moresby Ranges, the Club is an attractive location on which to enjoy a round of golf. The 18-hole course offers an invigorating test to players of all abilities, challenging lifelong members and first-time visitors in equal measure.

A dedicated PGA-qualified Golf Professional is available throughout the week for coaching and advice; and practice facilities on site include a driving range and pitching and putting greens to assist golfers of all levels reach their golfing goals.

Great service and good company can be enjoyed in the Clubhouse. The Club caters for functions of

all kinds, from birthday celebrations and wedding receptions to product launches and conferences.

Golf groups are very welcome, with friendly staff committed to creating a golf day to remember both on and off the course. Corporate clients can benefit from sponsorship opportunities and take advantage of the great venue for a meeting or special occasion.

There are many reasons you should come and visit, but right at the top is the promise of the warmest of welcomes. The staff and members of the Geraldton Golf Club look forward to seeing you soon.







## RETIREMENT LIVING IN GERALDTON



### **Trade in your house!**

Now you have the option to trade your house in and move into your new exquisite Home by the Beach. Contact us to find out if you qualify for this unique opportunity.



*"For us, living at The Lighthouse Estate is paradise and a hidden gem. Such a fantastic location with great cycling of 30km along the coast, river walks, bush walks and beach walking all at our doorstep. You can't beat a walk along the coast just as the sun sets over the Indian Ocean. Pure bliss. We are so very lucky and have such great neighbours too."*



*You'll love  
living by the beach*

**Give us a call 0476 776 747**

58 Kempton St, Bluff Point, Geraldton

**[lighthouseestate.com.au](http://lighthouseestate.com.au)**



**LIGHTHOUSE Estate**

— bluff point —

# A BRIEF HISTORY

Geraldton Golf Club was formed in 1926, playing on sites at Majors Hill and inside the racecourse and showgrounds at Utakarra Oval before moving to its present home, in 1932.

Looking at the magnificent course available for play today, it is hard to imagine the amount of work that had to be undertaken with no modern machinery to clear the course of virgin scrub.

During the 1930s the Club boasted a total membership of approximately 30 members and associates, a ground staff of one pensioner and plant that consisted of a wheelbarrow and odd hand implements!

In its early days the course consisted of dirt fairways and sand 'greens'. Play was only possible during winter months. The Clubhouse was a wood and iron three-room building.

During the Second World War, the Club was taken over by the Army and the Clubhouse housed a dental unit. Two top Australian golfers of the day were in this Army unit.

It was not until the late 1970s that Geraldton introduced grass greens, thanks to a Club member, whose experimentation discovered a type of grass that thrived in the saltwater from the bores that were used to irrigate the course in those days.

Today the Club is the proud owner of a first class 18-hole grassed course, a modern Clubhouse with all the facilities and state-of-the-art plant. This offers the discerning golfer a year-round course at a membership which is nearly half the fees of many metropolitan Clubs.







Our vision is to shape a healthier Geraldton by personalising health care and providing excellence in customer service.

**100% locally owned & operated • Convenient drive thru service**

**Mobility Equipment Hire • DVA & Veteran Support**

**FREE DELIVERY**



pharmacy **194**

**194 Durlacher Street, Geraldton (convenient parking)**

**08 9921 6138 | [pharmacy194.com.au](http://pharmacy194.com.au)**



## THE COURSE

The course at Geraldton Golf Club is widely regarded to be one of the best in rural WA . Its saltene greens and couch grass fairways flourish in the warm climate and ensure a perfect playing surface.

Those journeying to Pass Street and discovering the Club for the first time are amazed to find this emerald gem right on the doorstep of the city. Just as importantly, golfers of all levels are challenged by the course.

The course is a par-71 for Men, with three par-3s and two par-5s on the front nine and two par-3s and two par-5s on the back nine. The Women play an equally invigorating par-72 layout, benefitting from an extra shot on the 11th, one of the toughest par-4s on the card for the Men. At 5,928 metres off the blue championship tees, it is a challenge, rewarding strategy and careful Club selection.

The thousands of gum trees that line the course are a majestic sight, but better viewed from the centre of the fairway!

# Geraldton Greenough

## FINANCIAL SERVICES



- › Financial Planning
- › Superannuation Advice
- › Estate Planning
- › Insurance and Risk Management
- › Pre and Post Retirement Planning
- › Aged Care & Centrelink
- › Business Insurance

To arrange an appointment with us, contact:

**P** (08) 9964 2522

**E** [enquiries@ggfs.com.au](mailto:enquiries@ggfs.com.au)

**WWW.GGFS.COM.AU**

*We provide the latest in dental technology and facilities to maximise your comfort during your appointment.*



**OUR SERVICES  
INCLUDE:**

 **CHILDREN'S DENTISTRY**

 **EXAMS**

 **CROWNS & BRIDGES**

 **X-RAYS**

 **FILLINGS**

 **EXTRACTIONS**

 **ROOT CANALS**

 **IMPLANTS**



**CENTRO  
DENTAL**

[www.centrodental.com.au](http://www.centrodental.com.au)



All major dental insurances are accepted. Dr Chandy is a preferred provider for HBF and Bupa. We have a HICAPS terminal available, and we bulk bill to Medicare for children who qualify for the Child Dental Benefits Schedule (CDBS). Your dental health is important to us, and we want to make it affordable for you.

*We look forward to getting to know you and your family.*

86 Sanford Street  
Geraldton, WA 6530

Give us a call today  
**(08) 9964 2861**

# COURSE TOUR

To help you make the most of your time on the course, consider these useful tips and course notes.

**Distances: Men from the blue and white tees and Women from the red tees.**

## HOLE 1, PAR 4

**Blue Course 334m  
White Course 317m  
Red Course 305m**

A shorter par 4 than most, the 1st hole is downhill off the tee continuing in an easterly direction. The green is tucked slightly right behind the trees at the end of the fairway and is protected right and left with bunkers. The ideal place for your second shot is to the left.

## HOLE 2, PAR 3

**Blue Course 141m  
White Course 131m  
Red Course 124m**

A small but challenging par 3, requiring a precise tee shot. The green is protected with bunkers both left and right, and, with a tricky chip from the back of the green, your tee shot needs to be on target and not long to ensure a par on what is rated one of the easier holes on the course.

## HOLE 3, PAR 4

**Blue Course 357m  
White Course 350m  
Red Course 308m**

A tough par 4, with a dog-leg to the right creating difficulty off the tee. Big hitters fear overshooting the corner. If you can't reach that far ensure your tee shot is left, otherwise you will be cut off by the overhanging trees at the corner of the dog leg. With no bunkers around the green, golfers only have to contend with the challenging putting surface.

## HOLE 4, PAR 5

**Blue Course 480m  
White Course 445m  
Red Course 445m**

A long par 5 sets up for a challenging hole. With a dogleg to the left, the ideal drive is to the right of the fairway to avoid the trees on the left of the dogleg which are more in play than you might think at first glance. However, playing to the right brings into play two fairway bunkers on the edge of the fairway so planning is essential. A big green with no protection short enables the big hitters to go for the green in two, or makes a lay-up easy.







### HOLE 5, PAR 3

**Blue Course 184m**  
**White Course 174m**  
**Red Course 130m**

This par 3 is one of the more difficult holes on the front nine. Needing a wood for most golfers, or even a long iron for the big hitters, most players run the ball up to the green, as it is not protected. Left and right of the green are bunkers penalising an off-target tee shot. This is a hole you will be happy to par.

### HOLE 6, PAR 4

**Blue Course 394m**  
**White Course 386m**  
**Red Course 321m**

A long par 4 into the southerly breeze, this is the toughest hole on the course. A wide fairway doesn't help many players with any draw or slice being pushed into the trees. Missing the fairway almost definitely makes hitting the green in two impossible. With trees protecting the left of the green, the right side of the fairway is the best place to be. A large green sloping severely from back to front makes for a challenging putt coming down the hill.

### HOLE 7, PAR 5

**Blue Course 455m**  
**White Course 445m**  
**Red Course 445m**

A fairly straight-forward par 5 if you stay out of danger makes a very birdie-able hole. A misdirected shot may result in out of bounds down the left side. The green is protected by three bunkers, making it difficult to hit in two. A long undulating green with some hidden breaks set up a tough putting experience.

### HOLE 8, PAR 3

**Blue Course 181m**  
**White Course 173m**  
**Red Course 129m**

Another scintillating but challenging lengthy par 3. The southerly pushes everything right, making it hard to keep your ball heading to the green. Protected with bunkers left and right and a strong slope from back to front, the aim will be to finish short or on the front edge. A par on this hole will be well deserved.

### HOLE 9, PAR 4

**Blue Course 301m**  
**White Course 287m**  
**Red Course 277m**

This is the easiest hole on the front nine, straight up the hill to the Clubhouse. With a wide fairway and little protection, a good drive will leave only a wedge into the green for the big hitters. The bunkers on either side of the green mean a precise 2nd shot is essential. The green has a subtle slope from back to front. All in all an easy way to finish a tough nine holes.

### HOLE 10, PAR 5

**Blue Course 485m**  
**White Course 473m**  
**Red Course 458m**

This is a fantastic opening hole to the second nine, the snake-like shape can be rewarding for some. However, miss the fairway left and you find yourself in the dense trees and to the right you may find the fairway bunkers. The fairway then doglegs slightly left before straightening up towards the end of the hole, meaning your lay-up needs to be perfect. With small bunkers left and right of the green, a birdie is definitely achievable.



Midwest Vet Centre has been part of the Midwest community for more than 25 years, and in October 2020 welcomed the new owners Dr Tara Craft and Mrs Natalie Woods. Tara has been a vet for 12 years, and part of the Geraldton community for 9 years. Natalie has been a vet nurse for 4 years, and part of the Geraldton community her whole life.

Both Tara and Natalie have worked at Midwest Vet Centre for 4 years before taking the large leap to becoming its new owners.

We pride ourselves on offering care for your loved family member 24 hrs a day, 7 days a week, 365 days a year. We know that you can never predict when your pet may need help and that is why we are always here for you.

As well as the services we provide for your small animals, we also offer care for equine and livestock patients as well. We have a mobile service that can come to your house or property to give your pets all the attention they need. We have a fully equipped surgery so that we can offer orthopaedic and soft tissue procedures, radiographs, and ultrasound.

We value all of our clients and welcome new clients as well, so pop in and say hi, we look forward to seeing you and your family in the future.

Phone: (08) 9964 3671

After Hours: 0407 471 933

117 Cathedral Ave

[www.midwestvet.com.au](http://www.midwestvet.com.au)

[reception@midwestvet.com.au](mailto:reception@midwestvet.com.au)





# A Midwest Vet initiative, creating fur-ever friendships for you, your pets & the community

## An Annual Membership To Receive:

**2 x Complimentary examinations**

per membership per year

**5% Cash back rewards**

loaded onto your membership with every purchase and can be used as credit towards future services such as vaccinations, sterilisations, dental procedures, pathology, ultrasound, microchips, home visits and much more.

**Complimentary nail trim**

for one of your pets during their birthday month.

**1% Charity donation**

made by us on your behalf, towards one of four local charities for every dollar you spend at our practice

## How to join

In person at  
**Midwest Vets**

117 Cathedral ave  
Geraldton WA



For all creatures great and small.



T&C's apply, see our website for details



## HOLE 11

**Blue Course 417m, Par 4**  
**White Course 399m, Par 4**  
**Red Course 399m, Par 5**

This long, difficult par 4 opens with a tough drive, with the goal to get over the first mound. Go left and you cut yourself out, making right the preferred bail-out area. If your drive doesn't clear the mound it's nearly impossible to reach the green in two. Even with a big drive you will have at least a 5 iron to the green. Left of the fairway is out of bounds, but that's the side your ball needs to go to avoid the large overhanging trees. A slippery green with lots of different slopes creates a difficult putting surface. Escaping with a par here is very satisfying.

## HOLE 12, PAR 4

**Blue Course 343m**  
**White Course 325m**  
**Red Course 311m**

This small but challenging par 4 following the tough 11th hole doesn't put you at ease. A precise drive is needed to avoid the overhanging trees on the right of the fairway, and the out of bounds close on the

left. An ideal drive will position you with a mid-iron to a large green protected by one bunker on the front left. Another back-to-front sloping green means it's best to leave an uphill putt.

## HOLE 13, PAR 3

**Blue Course 162m**  
**White Course 153m**  
**Red Course 98m**

This straight forward par 3 is a relief for most after the tough tee shots from the previous two holes. Only a midiron for most golfers, a straight shot even running up to the green is enough to leave a birdie putt. However, this is another hole that punishes you for an errant tee shot, as left and right of the green results in a tough bunker shot from two of the deepest bunkers on the course.



## Let's make your dreams a reality

- Triton Building provides pre-purchase property inspections including specialised detailed reports.
- With over 48 years building experience you can be assured that your building inspector understands what to look for and how to identify possible issues.
- At Triton Building we also offer Strata Ten Year Maintenance Reports/Plans.
  - Experienced in all facets of commercial construction Triton Building are experienced in successfully delivering services in Project Management as well as end to end construction packages.



### Your Local Builder

A Geraldton based building company that is committed to providing you the best value, quality and functional home possible.

Our team will turn your ideas into a reality, advising on orientation, design, suitability for your chosen site and budget.



Call 0412 940 904 Visit [tritonbuilding.com.au](http://tritonbuilding.com.au)







**Geraldton**  
Golf Club







## HOLE 14, PAR 4

**Blue Course 350m**  
**White Course 334m**  
**Red Course 329m**

This is the easiest hole on the course. A drive to the right centre of the fairway will avoid the fairway bunker and result in an easy second shot to the green. Just ensure that you miss the trees just right of the tee as once in there the ball doesn't travel far. With only two small bunkers to protect the green, it shouldn't be too difficult to have a birdie putt. With a straight forward green you should be looking to hole it.

## HOLE 15, PAR 3

**Blue Course 152m**  
**White Course 143m**  
**Red Course 143m**

Another short par 3, only a mid-iron for most players. With only a small window to run the ball, you should be looking to land this on the full. There is a bunker short right and another all along the left. Neither bunker is nice but the left one is by far the tougher with the green running away from you. Another tricky green makes a one-putt difficult but once you know the break anything is possible.

## HOLE 16, PAR 5

**Blue Course 504m**  
**White Course 496m**  
**Red Course 465m**

The longest par 5 on the course isn't something you want to face if you are playing poorly. A good drive is right-centre of the fairway to straighten out the slight dog-leg. Left and right may result in

no shot forward, making the hole even longer. Two good shots will leave most golfers with less than 150 metres to the green, but a third shot up the hill to a dome-shaped green still makes the putting surface difficult to hit. With no protection around the hole, chipping and putting isn't difficult if you haven't damaged your score too much before this point.

## HOLE 17, PAR 4

**Blue Course 347m**  
**White Course 343m**  
**Red Course 343m**

A glamorous-looking hole from the tee is anything but. With overhanging trees, to have a shot at the green for two you need to be positioned left. However, down the left side is a fairway bunker you can't see from the tee. The green is flat but narrow and missing either side makes for a tough up and down. However, if you find the fairway off the tee and the green for two you should be looking to make a relatively straight forward putt.

## HOLE 18, PAR 4

**Blue Course 341m**  
**White Course 322m**  
**Red Course 317m**

A tough finishing hole, the 18th is a hard hole to master. The ideal shot is a draw up the middle to miss the large overhanging trees up the left that grab any ball going near them. An uphill second shot into the southerly breeze makes correct Club selection very tricky. A hard sloping green from back to front means you want to be putting up the hill if possible.

# Is your business game as polished as your golf game?

Our advisors can give you the support you need to look up and get the hole in one you've always dreamed of.



**ASCEND**  
**BUSINESS RESULTS**  
**ACCOUNTANTS & BUSINESS ADVISORS**

08 9965 4266

12 Anzac Terrace, Geraldton WA

[ascendresults.com.au](http://ascendresults.com.au)



## PRO SHOP

Open 7 days, our resident PGA member offers a warm welcome, professional and personable service.

The Pro Shop offers just about everything you would need to enjoy a good day's golfing.

To get the most from your game, ask about our popular custom fitting service. The staff in the Pro Shop are fully qualified fitters for Titleist, Taylor Made, Wilson, Callaway & PING and can custom fit any other brand in stock.

A fast and efficient club repair service is also offered.

Good quality sets of clubs are available for hire, as are electric carts and pull buggies.

Please feel free to come in and chat to our staff regarding your requirements. For general enquiries and tee bookings, call (08) 9964 1911 and we will be happy to take care of your needs.

# GAME IMPROVEMENT

Geraldton Golf Club has everything on hand to ensure that golfers of all abilities reach their potential and enjoy our great course to the full.

Lessons can be booked with our highly-rated PGA-qualified Teaching Professional who would be delighted to produce a coaching plan to help take your game to the next level.

Aims and objectives will be discussed, weaknesses identified and clear, concise instruction delivered in a way that enables the golfer to understand what is being taught, the reason for the change and how it will benefit their game.

Our PGA Professional can help anyone from the beginner to the seasoned professional looking to fine-tune their game. Video analysis is available and makes not only a great coaching tool, but an excellent reminder for the student of the swing change or new technique they were working on.

Quality instruction plays a crucial part in helping the golfer committed to becoming as good a player as available time, ability and dedication allows. Another key component is having accompanying practice facilities to work on ingraining new skills and techniques.

Members and visitors at Geraldton are well catered for here, too, with a number of areas available for them to work on their game, including a full-length driving range with grasstees, and a putting green for working on the short game available every day.

Take your first step to better golf: call the Pro Shop on (08) 9964 1911 and book your lesson today.



# BECOMING A MEMBER

If you have enjoyed a round of golf as a visitor to Geraldton Golf Club, then you really should consider becoming a member.

Membership provides access to an outstanding array of facilities at your fingertips. The magnificent 18-hole course is reason enough to join, but the friendly atmosphere in the Clubhouse has to be experienced in person to truly be appreciated.

Play 9 holes after work, and have a drink in our Clubhouse, or just come and socialise with friends, or meet new ones.

We have a range of membership options, including the flexible option of Lifestyle Membership for the time-poor.

We also have a Social Membership for the lapsed or non golfer who wishes to make use of the Clubhouse facilities, to benefit from Club prices and to have somewhere welcoming to bring friends and family.

One thing all memberships have in common is the value they offer. In comparison to a metropolitan Club, Geraldton Golf Club will make your hard-earned dollars stretch further.

Members can chart their continual improvement by gaining a Golf Australia handicap – recognised at golf clubs worldwide – and make their bookings either in person in the Pro Shop, by phone, or online.

## Current membership options include:

- Ordinary Member
- Senior Member
- Lifestyle Member
- Senior Lifestyle Member
- Junior Member
- Transitional Member (18-24 years of age inclusive)
- Social Member

And as all golfers know: the better you play, the more you will enjoy your game.

We love to see new faces and potential members should have no fears about joining us. There is a warm camaraderie between members, guests and staff. We don't stand on ceremony - you will instantly discover that when you walk into Grumblers Bar!

The membership year begins in March, but new members can join at any time and pay a pro rata subscription in their first year.

Memberships include all affiliation fees (Golf WA , Golf Link etc).

For more details, please contact the Secretary/ Manager by phone: (08) 9921 3326 or email: [email@geraldtongolfclub.com.au](mailto:email@geraldtongolfclub.com.au).





## MEMBER BENEFITS

Geraldton Golf Club has much to recommend it. Here is just a selection of the many benefits enjoyed by our members:

- Unlimited access to our 18-hole layout with no ongoing green fees for Ordinary or Senior Members
- Priority access to time slots outside competition times
- Get and maintain an active Golf Australia handicap that allows you to play on most courses in Australia and is recognised around the world
- Excellent Clubhouse facilities, including bar
- Family-friendly atmosphere, where partners and children are genuinely made to feel welcome
- Make new friends – the Club has a lively social scene with organised events and other more spontaneous get-togethers
- Access to a well-stocked Pro Shop with competitively priced goods manned by helpful and knowledgeable staff
- Access to the Club's talented PGA-qualified Professional for coaching and advice, backed up by excellent practice facilities
- Reduced bar prices in members' bar
- Eligibility for election to the Board of Management (conditions apply)
- The chance to play in countless Club events throughout the year, many providing the opportunity to win trophies
- Lots of social and less serious golf providing the chance to enjoy the game in a relaxed atmosphere
- Ample car parking



## MEMBERS' GOLF

Our members can enjoy a calendar packed with competitions throughout the year, ranging from prestigious Honour Board events through to more relaxed games where the overriding aim is simply enjoying golf in good company.

Several Club competitions act as local qualifiers with the winner going on to represent Geraldton in a regional event against other Clubs. One of the most notable of these is the Volkswagen Scramble, a hugely popular Pro-Amateur team event run by the PGA of Australia.

The traditional Honour Board events feature on the Club's annual golfing calendar, allowing players of all abilities to shine and have their name written in the Club's history.

In a typical week at Geraldton, Men and Women both enjoy golf competitions on Saturday and Sunday. The Women also play competitively on Wednesday. On Tuesdays there is a very keen group of lady golfers who enjoy nine holes first thing in the morning with a relaxed 18 holes for Men in the afternoon. Thursday



sees a popular and large number of men called the Scroungers take centre stage.

There is also a very popular intra-Club match play pennant competition for men which runs through the golf season.

Friday mornings at 9am during the school term is for lady or men golfers wanting to learn how to play golf. These “9@9” sessions feature a 30-minute lesson with our Golf Professional followed by a chance to “Have A Go” playing 9 holes of Ambrose Golf. It is the perfect, relaxed way to discover the delights of golf and the opportunity to make new friends and discover potential playing partners!

Visit the Events and Fixtures sections of the club website, [www.geraldtongolfclub.com.au](http://www.geraldtongolfclub.com.au), to get

a more detailed idea of the golf on offer.

Geraldton’s members have no airs or graces, they are just decent, fun-loving people who love the game of golf and each other’s company and having a laugh.

A number of social events are held throughout the year providing a great opportunity to meet other members and make new friends. Again, their varied nature means that there should be something to appeal to all tastes. Melbourne Cup Day and the Club’s annual Presentation Dinner are just two highlights of the Club’s social calendar.

We enjoy Twilight Golf and a friendly get-together for a Club social night each Friday, with raffles and the chance to win some great prizes.



# GLOW GERALDTON

*warm & vibrant photography*

SPECIALISING IN LIFESTYLE, EVENT, WEDDING AND COMMERCIAL PHOTOGRAPHY

Capturing glowing moments for families, individuals, businesses and beyond.

Stunning, affordable photography for Geraldton and the WA region.



Glow Geraldton



@glowgeraldton



glowgeraldton.com





## SPECIAL GOLF EVENTS

Geraldton Golf Club hosts several feature golf events during the season which are open to members and players from other Clubs.

These tournaments always receive wonderful support, are well received by the participants and give the Club the chance to showcase its excellent facilities to a wider audience.

One of the highlights of the year is Geraldton Country Week held in January. First staged in 1980, it has gone from strength to strength and developed into the best week of golf in country Western Australia.

Staged jointly with our friends at Spalding Park Golf Club, our event is unique in offering separate daily competitions for sand and grass green-based golfers for a full week. Most of our visitors extend their stay to play in Club events prior to and after Country Week.

Other events at Geraldton include the Easter Amateur Open, a 36-hole event for Men and Women played over two days on Saturday and Sunday which is preceded by a relaxed rolling Stableford competition on Good Friday and followed by a recovery Stableford on Easter Monday.

The Geraldton Amateur Open is a 36-hole stroke play event held on the long weekend in June, with prizes for Men and Women.

Details of these – and our other major events – are always publicised well in advance on the Club website, [www.geraldtongolfclub.com.au](http://www.geraldtongolfclub.com.au), and our Facebook page.



## JUNIOR GOLF

Geraldton Golf Club prides itself on being a family Club and is a great place for juniors to learn to play the game.

We are committed to turning hopeful young golfers into the best players they can possibly be, offering a safe and supportive environment in which to develop.

Juniors represent the future, both for our Club and the game of golf and nurturing the next generation of players is one of our core values, which is why the Club has one of the strongest junior programs in the region.

We start the beginners in our SNAG Golf Group. SNAG stands for Starting New At Golf and features fun, easy to use equipment and simplified rules and terminology.

Each child is taught the basics, so they have the fundamentals in place to be able to go on and enjoy a lifetime's good golf. As the child's confidence and

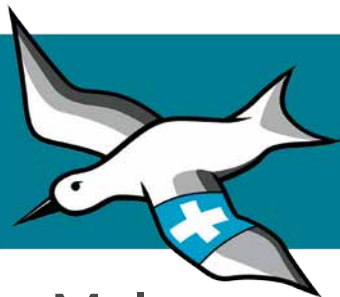
ability grows, they progress to the stage where they can go out and enjoy play on the course. Visit [snaggolf.com](http://snaggolf.com) and [www.mygolf.org.au](http://www.mygolf.org.au) to find out more.

Our junior coaches are supportive, patient and encouraging. Help is given to players of all abilities and every encouragement given for the high fliers to realise their golfing dreams.

Whatever their level, golf is a great sport for children to learn. It teaches respect, focus, concentration, coordination and, above all, goodwill towards others. These are life skills that every parent wants of their children.

For details of how your child can enjoy golf at Geraldton Golf Club, pop into the Pro Shop or call the Club on (08) 9964 1911.

CITY  
**HEALTH**  
GERALDTON



## Geraldton Mole & Skin Cancer Clinic

### When was your last skin check?

Using the latest equipment, we ensure that your skin conditions are professionally assessed and treated by our doctors. Our purpose built facilities enable our staff and doctors to provide you with quality care in modern and comfortable surroundings. Having a passion for skin health, our doctors can perform complex skin surgery to treat skin cancers.

**We offer skin checks and a full GP service**  
Male & Female GPs available



08 9921 4433

194 Durlacher St, Geraldton  
admin@cityhealthgeraldton.com.au

**BOOK ONLINE**  
cityhealthgeraldton.com.au

whyattslandrover.com.au

**Your destination for all things  
Land Rover since 1999**

**WHYATTS**



**ABOVE AND BEYOND**

- Land Rover Approved Service & Parts Centre
- Continental, Pirelli & General Grabber tyres for all makes & models
  - Roadside Assistance & Towing for all makes & models
- RAC Battery for all makes & models
- Land Rover genuine windscreens
- Independent service for late model BMW, MINI, Mercedes-Benz & Jaguar

**The complete Land Rover  
after-sales solution**

90 Anderson Street, Geraldton  
T (08) 9965 4333

E service.whyatts.auto@gmail.com

MRB 645 D/L 19067



# VISITORS & SOCIAL GOLF

Visitors wishing to come and enjoy our picturesque golf course are made to feel most welcome here at Geraldton Golf Club.

Social golf is available most days outside the Club's designated competition times or other major events such as corporate golf days. It is always advisable to phone ahead to book a teetime or to check with the Club our competition schedule for the day.

Enjoy the golf and stay for a drink in the Clubhouse, where you will find the welcome just as warm as the one you received in the Pro Shop or out on the course.

Geraldton has a wonderful course. Not too easy, not too tough, but the perfect challenge for any player no matter what their level of expertise. We have Clubs for hire and electric carts and trolleys available to hire for those wishing to save their energy to play their best golf.

Situated on Australia's Coral Coast, Geraldton is a great place to enjoy a short break. There are wonderful beaches, the area is rich in Indigenous, maritime and pioneering history, and, of course, there's a pretty special golf course to enjoy too! Visit [www.australiascoralcoast.com](http://www.australiascoralcoast.com) to find out more.

To avoid disappointment, it is advisable to make a booking with the Pro Shop prior to your visit by calling (08) 9964 1911.





# CLUBHOUSE

The Geraldton Golf Club Clubhouse is a delightful place to spend some time in the company of friends, offering a home away from home to members, guests and visitors alike. Our dress code reflects a country Club atmosphere of relaxed and casual.

The elevated location of our Clubhouse provides attractive views down over our magnificent golf course, with the flat topped Moresby Ranges as a backdrop. The terrace is a favourite spot to enjoy a drink.

The large members' lounge provides a comfortable setting in which to relax before or after a round of golf, or simply to meet up with friends for a chat over a cup of coffee or a glass of wine. If you are looking for a less formal bar, then rub shoulders with some of the characters of the Club in Grumblers Bar.

In addition to the pleasant surroundings, a constant throughout the Club's existence has been the excellent service and the warmth of the welcome. Geraldton's staff pride themselves on the personal touch where nothing is too much trouble.

Whether a lifelong member or first-time visitor, the Clubrooms offer a restful atmosphere and the promise of catching up with old friends or making new ones.

As you enjoy your surroundings remember, too, that the Club has a selection of meeting rooms and function areas should you wish to host an event for business or leisure.





## FUNCTIONS & SPECIAL OCCASIONS

Geraldton Golf Club is the perfect venue for just about any function – birthday and Christmas parties, lazy long lunches, elegant weddings, team building events, business seminars and conferences, receptions and cocktail events.

A spectacular location, good food and conscientious staff ensure that we tick all the boxes when it comes to function hosting. We are also conveniently located, less than five minutes from the centre of town.

With panoramic views of the rolling fairways and the Moresby Ranges beyond, Geraldton Golf Club makes a great location for a wedding.

Our dedicated team are on hand to organise anything and everything you may need for your

special day, providing personal and professional service from the time that you first call to the time you say your farewells.

The success of the most important day of your life means as much to our staff as it does to you, and it shows.

With the backdrop of the golf course, your bridal photographer will have all the inspiration he or she needs to create the wedding album of your dreams. It's not just weddings, though.

Geraldton Golf Club is a very appealing setting for your corporate or social functions and events.

Looking for a setting for a business meeting that will ensure your staff are at their creative best? Look no further.

We are able to arrange catering at your request, there is complimentary parking on site and our staff who will ensure you and your guests have a positive experience, no matter what the occasion.

If you have any further questions or would like to arrange a viewing of the premises, please contact the Secretary/Manager by phone: (08) 9921 3326 or email: [email@geraldtongolfclub.com.au](mailto:email@geraldtongolfclub.com.au).

# CORPORATE DAYS

Why not entertain your clients at one of Country WA's premier golf courses, or reward your staff with a golf day, lunch and/or dinner – the perfect mix between work and play!

The opportunity exists for you to plan and enjoy your own corporate golf event at Geraldton Golf Club, which sets the standard when it comes to corporate events. With a delightful golf course just a few minutes from the centre of town, a spacious and well-appointed Clubhouse, great food and key staff dedicated to make your day a complete success, Geraldton is the perfect choice when it comes to corporate or charity golf days.

Extraordinary corporate golf days seldom happen by chance. Let us plan something extraordinary for your company. We can cater for groups of all sizes and would be happy to tailor a package to suit your budget.

We can format your day, advising the appropriate game and handicapping procedures and take care of as much of the logistics as required, leaving golf day hosts to concentrate on their invited guests and achieving their aims for the event.

Our bar and kitchen staff will provide for your on-course and off-course refreshment and catering needs.





There is a great selection of merchandise available in the Pro Shop, which is the perfect place to stock up with any competition prizes you may require.

Some relaxed competition always goes down well. Our friendly Professional can suggest formats to ensure your guests get maximum enjoyment from their day. He can also provide nearest the pin and longest drive markers should they be required and is available for golfing tuition or to put on group golfing clinics before play if desired.

Want to make your day extra special? Then consider enlisting the services of our Professional for part of or your entire round. He is available to offer helpful advice or challenge your clients in a friendly Beat the Pro competition.

When the golf is over, relive the day over a drink and food of your choice in the Clubhouse.

Once again, it's your event, not ours, and you won't be forced to accept an imperfect package. Come to us with your food and beverage requirements and we will do our very best to accommodate.

Looking for a unique experience? Ask us about organising a Night Golf event at Geraldton!

You don't have to be a golfer to appreciate what Geraldton Golf Club has to offer. We are an excellent choice for conferences and meetings.

For full details and quotes please contact the Secretary/Manager by phone: (08) 9921 3326 or email: [email@geraldtongolfclub.com.au](mailto:email@geraldtongolfclub.com.au).

For further information on equipment needs including cart and Club hire and, if needed, a coaching clinic with our Club Professional, please contact the Pro Shop by phone: (08) 9964 1911.





## HOW TO FIND US

Geraldton Golf Club is located in Pass Street, less than five minutes' drive from the centre of Geraldton.

### DIRECTIONS

#### From the North

Turn left at the traffic lights off the North West Coastal Highway onto Eighth Street (sign posted Wonthella Sporting Complex). At the next roundabout, take the second exit onto Pass Street. The entrance to Geraldton Golf Club is located 900 metres along this road on your left.

#### From the South

Turn right at the traffic lights from the Brand Highway onto the North West Coastal Highway (sign posted Airport). After 2km turn right at the NWC Hwy/Eastward Road intersection (traffic lights and Caltex Service Station) and then turn left at the next roundabout which is Pass Street. The entrance to Geraldton Golf Club is located 200 metres along this road on your right.

## CONTACT INFORMATION

### Geraldton Golf Club

30 Pass St  
Geraldton  
WA 6531

#### Postal Address:

PO Box 389  
Geraldton  
WA 6531

**Club Phone:** (08) 9921 3326

**Pro Shop Phone:** (08) 9964 1911

**Email:** [email@geraldtongolfclub.com.au](mailto:email@geraldtongolfclub.com.au)

**Website:** [www.geraldtongolfclub.com.au](http://www.geraldtongolfclub.com.au)

**Social Media:** Keep up to date with all the latest news from the Club by liking our Facebook page:

[facebook.com/geraldtongolfclub](https://facebook.com/geraldtongolfclub)





# Geraldton

Golf Club



[geraldtongolfclub.com.au](http://geraldtongolfclub.com.au)